

Gynecological Specimen Collection

Required Labeling

1. Please remember to label the slide or vial with the patient's full name. The laboratory cannot accept a Pap smear specimen without positive identification on the label.
2. For conventional smears, use **pencil** to label the frosted end of the slide. Never use ink on the slide.

Required Information

1. For Medicare, you must include an ICD-9 code indicating reason for testing (low-risk screen, high-risk screen, or diagnostic test).
2. Indicate gynecological testing requested (conventional or liquid-based Pap test). For liquid-based specimens, you must select Pap only, Pap and HPV, Pap Reflex to HPV, or HPV only.
3. Source of specimen (vaginal, cervical, etc.)
4. Date of patient's last menstrual period.
5. Result of last Pap test.
6. Other Pap test history.

Conventional Pap Smear

Materials Required

1-3 Pap smear holders
1-3 Frosted-end slides
1-2 Cytospatulas (Ayre spatula)
1 Cytobrush
Spray fixative

Patient Preparation

The patient should not douche or engage in intercourse for 24 hours preceding the smear, nor should the patient be menstruating (a mid-cycle smear is preferred).

Procedure: Routine Vaginal Smear

Scrape material from vaginal pool with cytospatula. Smear material on clean glass slide bearing patient identification. (See figure 1.) Spray-fix immediately. Allow smears to dry on the slide before closing the cardboard holder.

Procedure: Cervical Smear

With a second cytospatula, using a rotary motion, sample the entire 360 degrees of the cervix. Smear material on clean glass slide bearing patient identification (See figure 1.) Spray-fix immediately. Allow smears to dry on the slide before closing the cardboard holder.

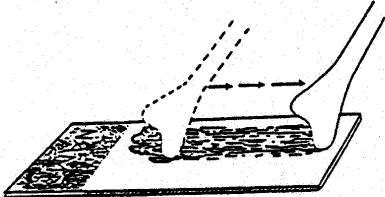
Procedure: Endocervical Smear

With the cytobrush, using a rotary motion, sample the endocervical canal. Smear material on a clean glass slide bearing patient identification. (See figure 1.) Spray-fix immediately. Allow smears to dry on the slide before closing the cardboard holder.

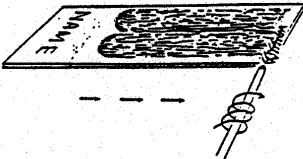
Store/Transport specimens at room temperature.

Conventional PAP Smear Sample Protocol

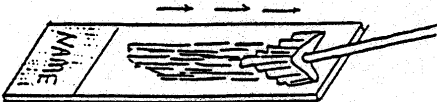
Transferring the Sample(s) to the Slide



To transfer material from the spatula: Smear sample with a single stroke motion using moderate pressure to thin out clumps of cellular and mucus material. Avoid excessive force or manipulation which will damage cells.



To transfer material from the brush: Roll the bristles across the slide by twirling the brush handle.



To transfer material from the broom: Smear sample with a painting action, using both sides of the broom.

Monolayer (Thinprep) Pap

Materials Required:

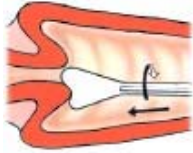
- 1 PreservCyt vial
- 1 Cytospatula, Cytobrush or Broom

Procedure:

1. Open the PreservCyt vial.
2. With the cytospatula, sample the entire 360 degrees of the cervix, using a rotary motion.
3. Rinse the spatula as quickly as possible into the PreservCyt solution by swirling the spatula vigorously in the vial 10 times. Discard the spatula.
4. With the cytobrush, insert the brush into the cervix until only the bottom-most fibers are exposed. Slowly rotate $\frac{1}{4}$ or $\frac{1}{2}$ turn in one direction. DO NOT OVER-ROTATE.
5. Rinse the brush as quickly as possible in the PreservCyt solution by rotating the brush in the solution 10 times while pushing against the vial wall. Swirl the brush vigorously to further release material. Discard the brush.
6. Tighten the cap on the vial so that the torque line on the cap (black line) passes the torque line on the vial (black line).
7. Record the patient's name and ID number on the vial.
8. Place the vial and requisition in a specimen bag for transport.
9. Store/Transport specimens at room temperature.

Brush/Spatula Protocol

ThinPrep® Pap Test Quick Reference Guide – Endocervical Brush/Spatula Protocol



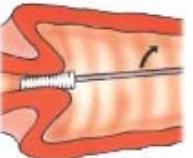
Obtain...

...an adequate sampling from the ectocervix using a *plastic* spatula.



Rinse...

...the spatula as quickly as possible into the PreservCyt® Solution vial by swirling the spatula vigorously in the vial 10 times. Discard the spatula.



Obtain...

...an adequate sampling from the endocervix using an endocervical brush device. Insert the brush into the cervix until only the bottommost fibers are exposed. Slowly rotate 1/4 or 1/2 turn in one direction. DO NOT OVER-ROTATE.



Rinse...

...the brush as quickly as possible in the PreservCyt Solution by rotating the device in the solution 10 times while pushing against the PreservCyt vial wall. Swirl the brush vigorously to further release material. Discard the brush.



Tighten...

...the cap so that the torque line on the cap passes the torque line on the vial.



Record...

...the patient's name and ID number on the vial.

...the patient information and medical history on the cytology requisition form.

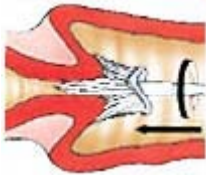


Place...

...the vial and requisition in a specimen bag for transport to the laboratory.

Broom-Like Device Protocol

ThinPrep® Pap Test Quick Reference Guide: Broom-Like Device Protocol



Obtain...

...an adequate sampling from the cervix using a broom-like device. Insert the central bristles of the broom into the endocervical canal deep enough to allow the shorter bristles to fully contact the ectocervix. Push gently, and rotate the broom in a clockwise direction five times.



Rinse...

...the broom as quickly as possible into the PreservCyt® Solution vial by pushing the broom into the bottom of the vial 10 times, forcing the bristles apart. As a final step, swirl the broom vigorously to further release material. Discard the collection device.



Tighten...

...the cap so that the torque line on the cap passes the torque line on the vial.



Record...

...the patient's name and ID number on the vial.

...the patient information and medical history on the cytology requisition form.



Place...

...the vial and requisition in a specimen bag for transport to the laboratory.